

ADDENDUM ONE QUESTIONS and ANSWERS

Date: March 28, 2023

To: All Bidders

From: Michelle Zinke
History Nebraska

RE: Addendum for Request for Proposal Neligh Mill #1
to be opened April 4, 2023 at 11:00 a.m. Central Time

Questions and Answers

Following are the questions submitted and answers provided for the above mentioned Request for Proposal. The questions and answers are to be considered as part of the Request for Proposal. It is the Bidder's responsibility to check the State Purchasing Bureau website for all addenda or amendments.

<u>Question Number</u>	<u>Question</u>	<u>State Response</u>
1.	Are there any drawings or plans of the structures to be demolished?	Various photos from multiple angles are included as an attachment to these questions. Architecture drawings are included as an attachment to these questions.
2.	What is the approximate height of the tallest structure?	The tallest structure to be demolished is the west elevator. See attached drawings for additional details.
3.	Is there going to be a pre-bid meeting at the site?	There is no pre-bid meeting scheduled.
4.	Are there any utilities to be disconnected (water, sewer, power) and will the contractor be responsible for the cost?	The primary utility to be considered is the city power lines that are in close proximity to the elevators but not attached to them. History Nebraska has been informed previously that the power lines cannot be shut down or diverted. The Contractor will need to work with the local utility company regarding this matter.

This addendum will become part of the proposal and should be acknowledged with the Request for Proposal.

ADDENDUM ONE QUESTIONS and ANSWERS

Attachment A: Photos



1. View of mill and elevators looking northeast



4. View of main mill building and elevators looking east.



5. View of elevators looking south.



6. View of elevators looking southwest.



8. View of elevators and mill looking southwest.



10. View showing elevators at left and Cowboy Trail at right looking northwest.



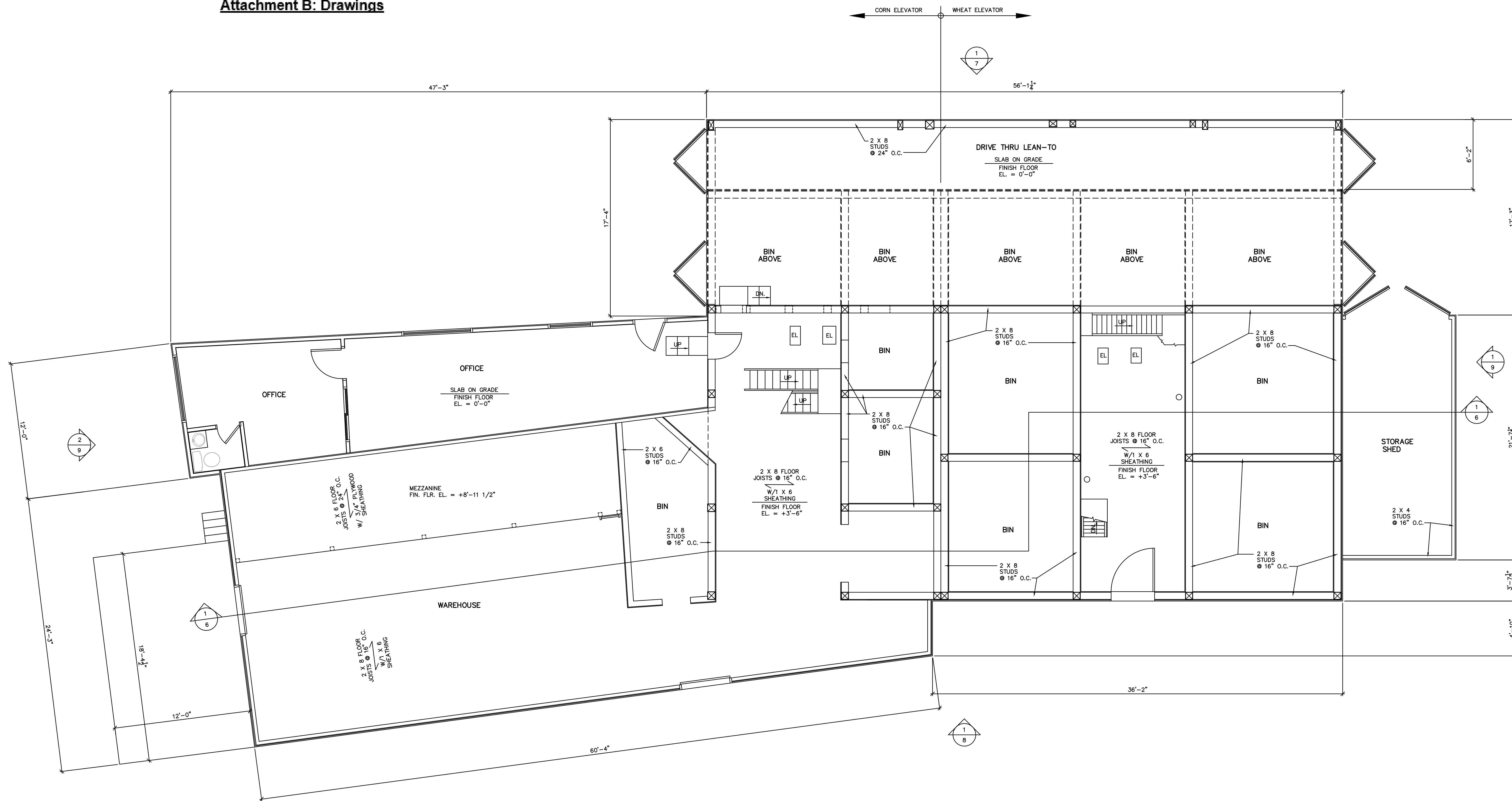
12. View showing relationship and physical connection between brick mill building and elevators looking northwest.



Alternate view of elevator and train car.

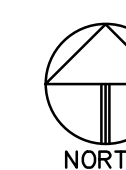
ADDENDUM ONE QUESTIONS and ANSWERS

Attachment B: Drawings



FIRST LEVEL FLOOR PLAN

SCALE : 1/4" = 1'-0"



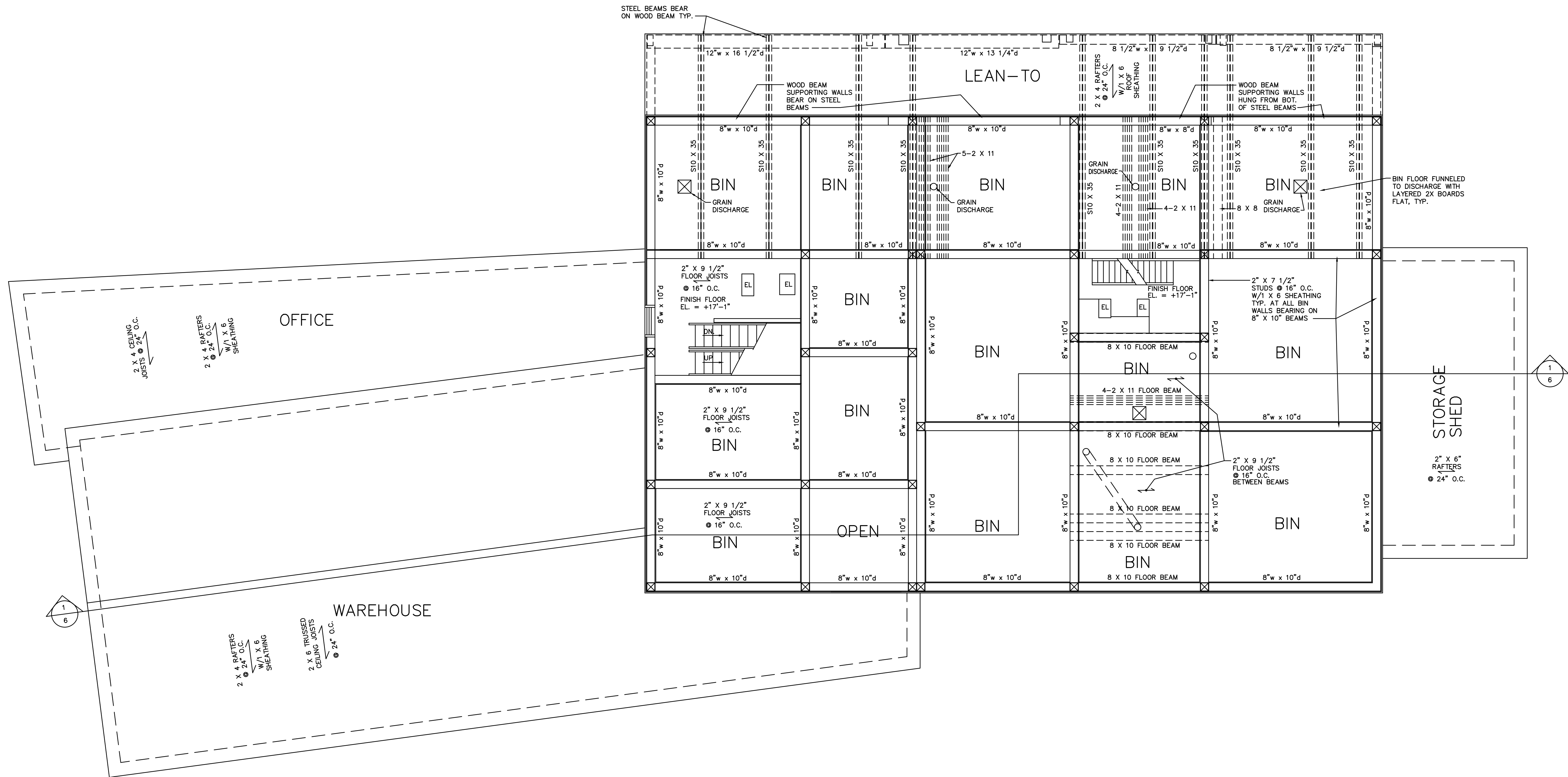
FIRST LEVEL FLOOR PLAN

NELIGH MILL ELEVATOR
AS BUILT DRAWINGS
WYLIE DRIVE
NELIGH, NEBRASKA

DATE: 14 DECEMBER, 2022
CHECKED BY: K.D.L.
DRAWN BY: D.L.H.
SHEET NO: 1 of 9
JOB NUMBER: 22073

KENNETH D. LATHRUM & ASSOCIATES, P.C.
STRUCTURAL ENGINEERING CONSULTANT
1901 N. 68th ST., OMAHA, NE 68114
(402) 391-5561 lathrum@questoffice.net

© KENNETH D. LATHRUM & ASSOCIATES, P.C. 2022
This document and the information contained herein shall not be reproduced or excerpted from without the express written permission from the author.

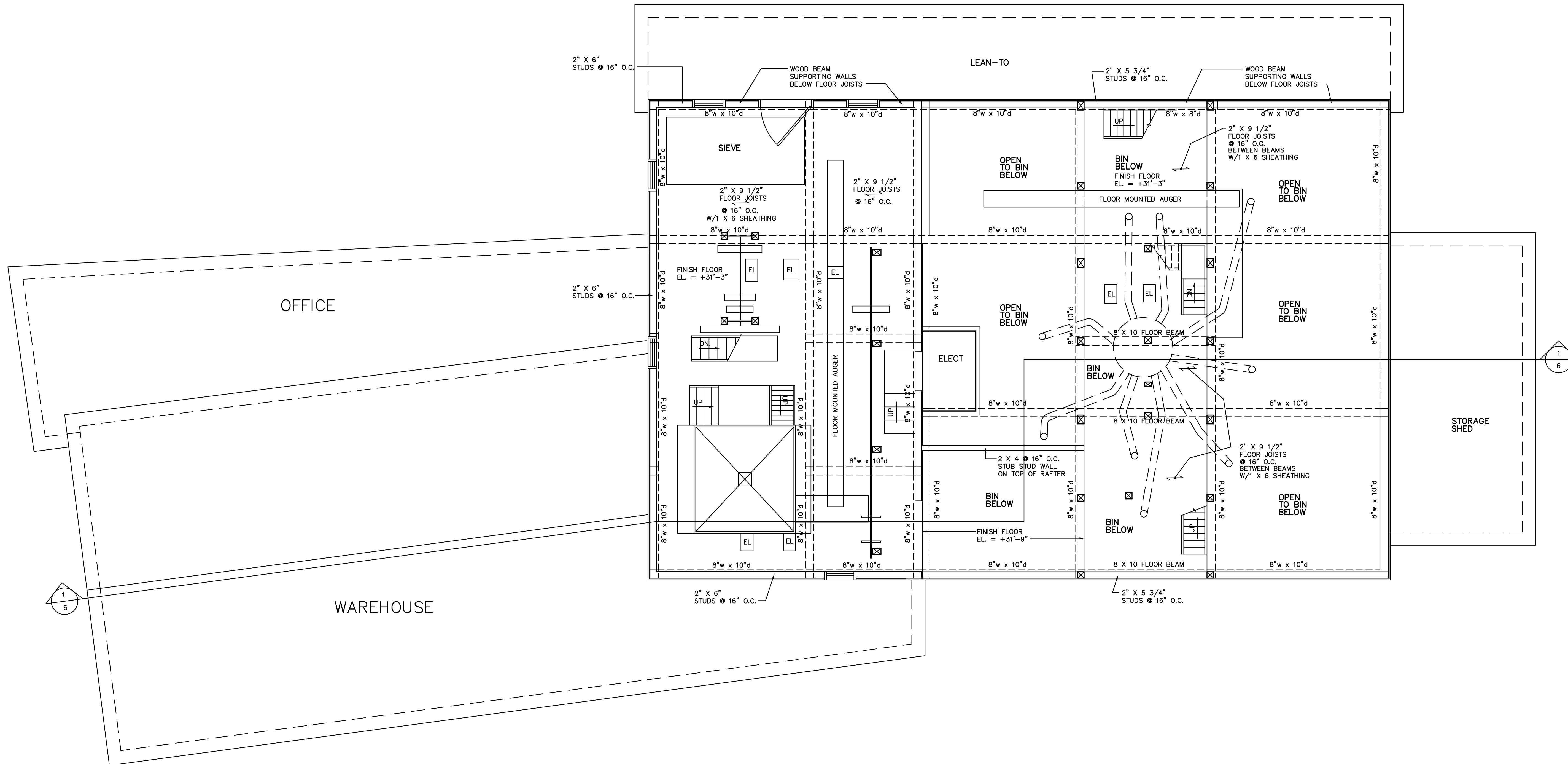


SECOND LEVEL FLOOR PLAN

SCALE : 1/4" = 1'-0"




SECOND LEVEL FLOOR PLAN	
NELIGH MILL ELEVATOR AS BUILT DRAWINGS	
WYLIE DRIVE NELIGH, NEBRASKA	
DATE: 14 DECEMBER, 2022	CHECKED BY: K.D.L.
DRAWN BY: D.L.H.	SHEET NO. JOB NUMBER
2 of 9	22073
KENNETH D. LATHRUM & ASSOCIATES, P.C. STRUCTURAL ENGINEERING CONSULTANT 1801 N. 81st ST., OMAHA, NE 68114 (402) 391-5861 lathrum@kwestoffice.net	
<small>© KENNETH D. LATHRUM & ASSOCIATES, P.C. 2022 This document and the information contained herein shall not be reproduced or excerpted from without the express written permission from the author.</small>	

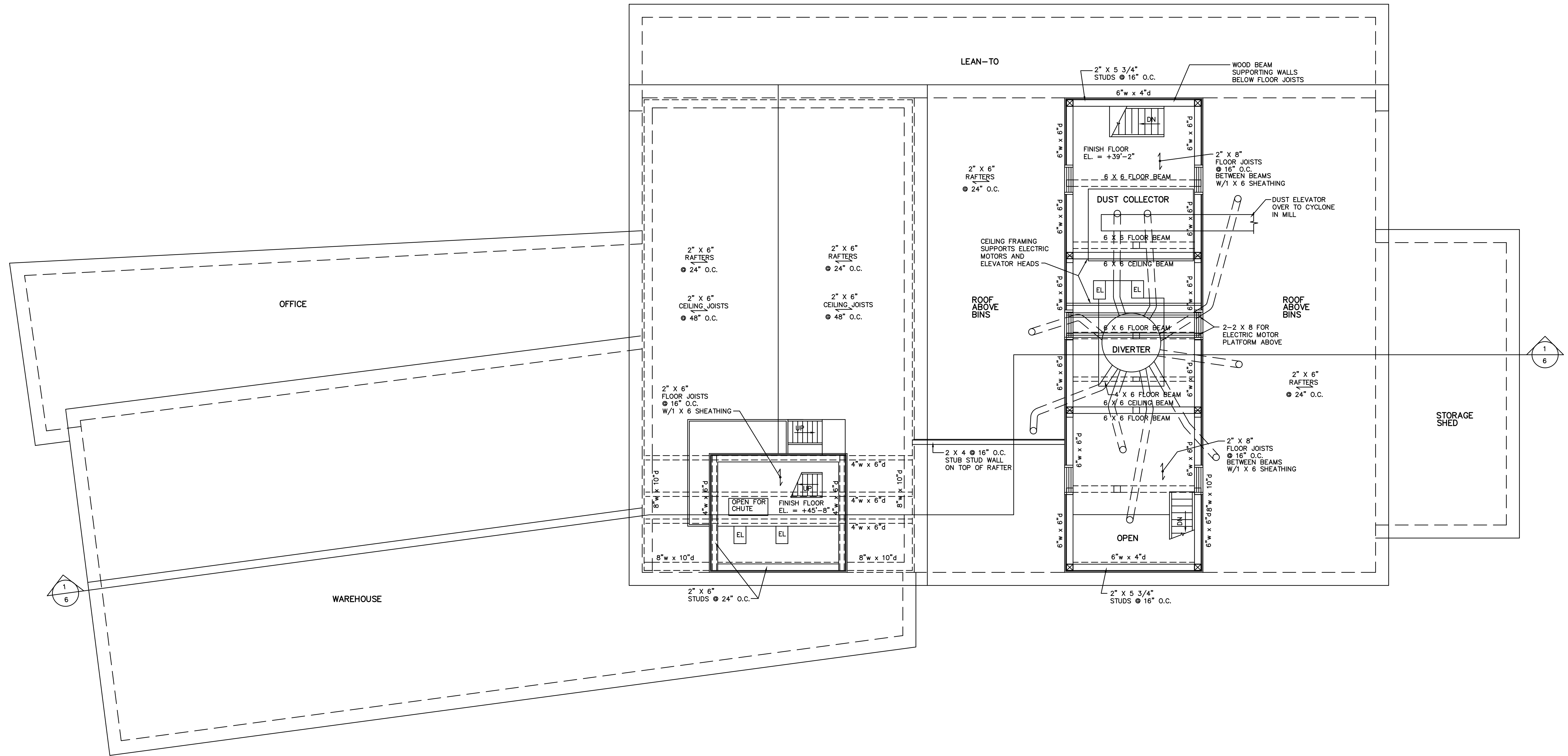


THIRD LEVEL FLOOR PLAN

SCALE : 1/4" = 1'-0"



THIRD LEVEL FLOOR PLAN	
DATE: 14 DECEMBER, 2022	CHECKED BY: K.D.L.
NELIGH MILL ELEVATOR AS BUILT DRAWINGS	DRAWN BY: D.L.H.
WYLIE DRIVE NELIGH, NEBRASKA	SHEET NO. 3 of 9
	JOB NUMBER 22073
 KENNETH D. LATHRUM & ASSOCIATES, P.C. STRUCTURAL ENGINEERING CONSULTANT 1901 N. 81st ST., OMAHA, NE 68114 (402) 391-5861 lathrum@questoffice.net	
<small>© KENNETH D. LATHRUM & ASSOCIATES, P.C. 2022 This document and the information contained herein shall not be reproduced or excerpted from without the express written permission from the author.</small>	

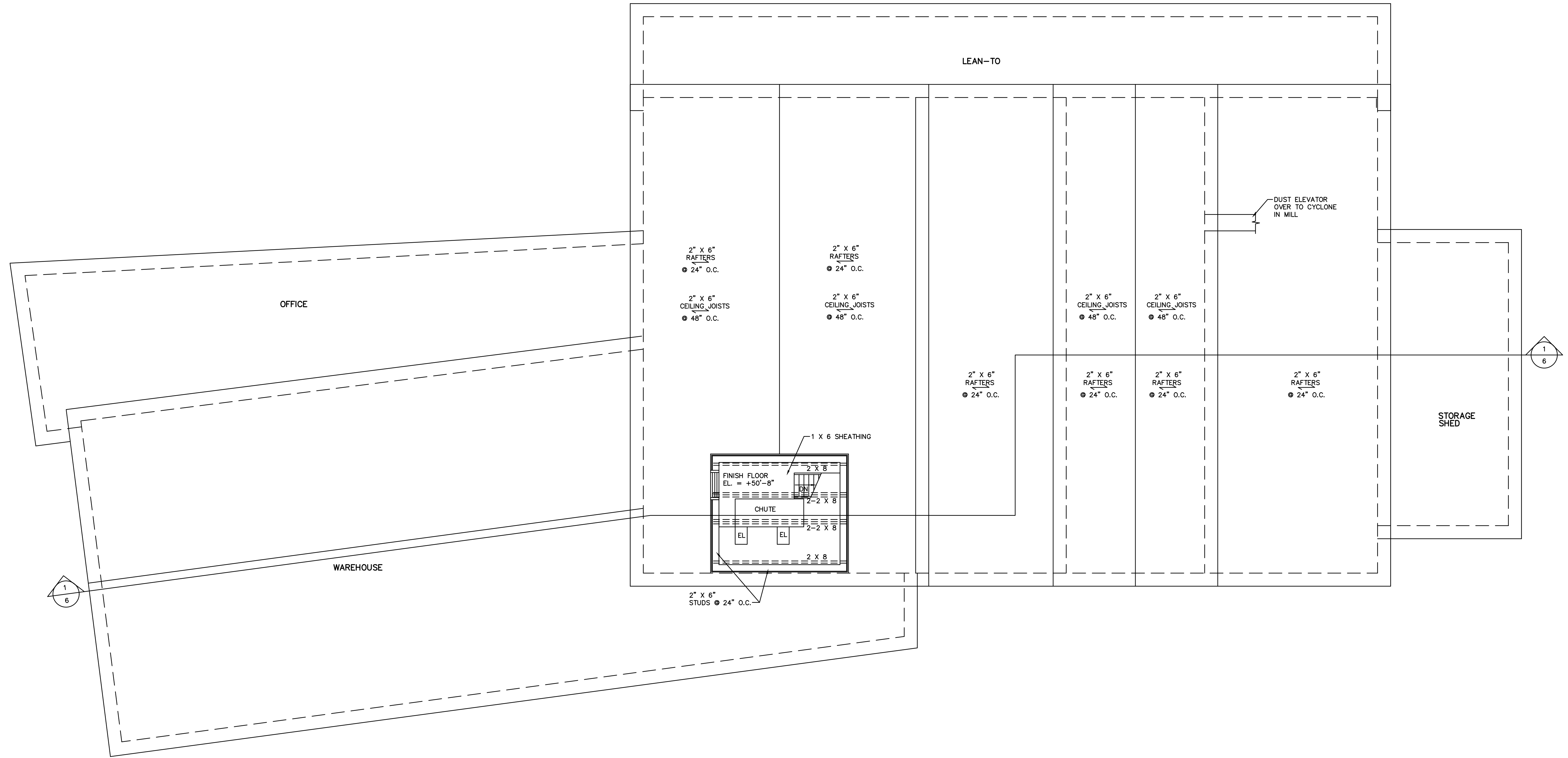


FOURTH LEVEL FLOOR PLAN

SCALE : 1/4" = 1'-0"




FOURTH LEVEL FLOOR PLAN	
NELIGH MILL ELEVATOR AS BUILT DRAWINGS WYLIE DRIVE NELIGH, NEBRASKA	
DATE: 14 DECEMBER, 2022 CHECKED BY: K.D.L. DRAWN BY: D.L.H.	SHEET NO. JOB NUMBER 4 of 9 22073
KENNETH D. LATHRUM & ASSOCIATES, P.C. STRUCTURAL ENGINEERING CONSULTANT 1801 N. 81st ST., OMAHA, NE 68114 (402) 391-5561 lathrum-qwestoffice.net	
<small>© KENNETH D. LATHRUM & ASSOCIATES, P.C. 2022 This document and the information contained herein shall not be reproduced or excerpted from without the express written permission from the author.</small>	

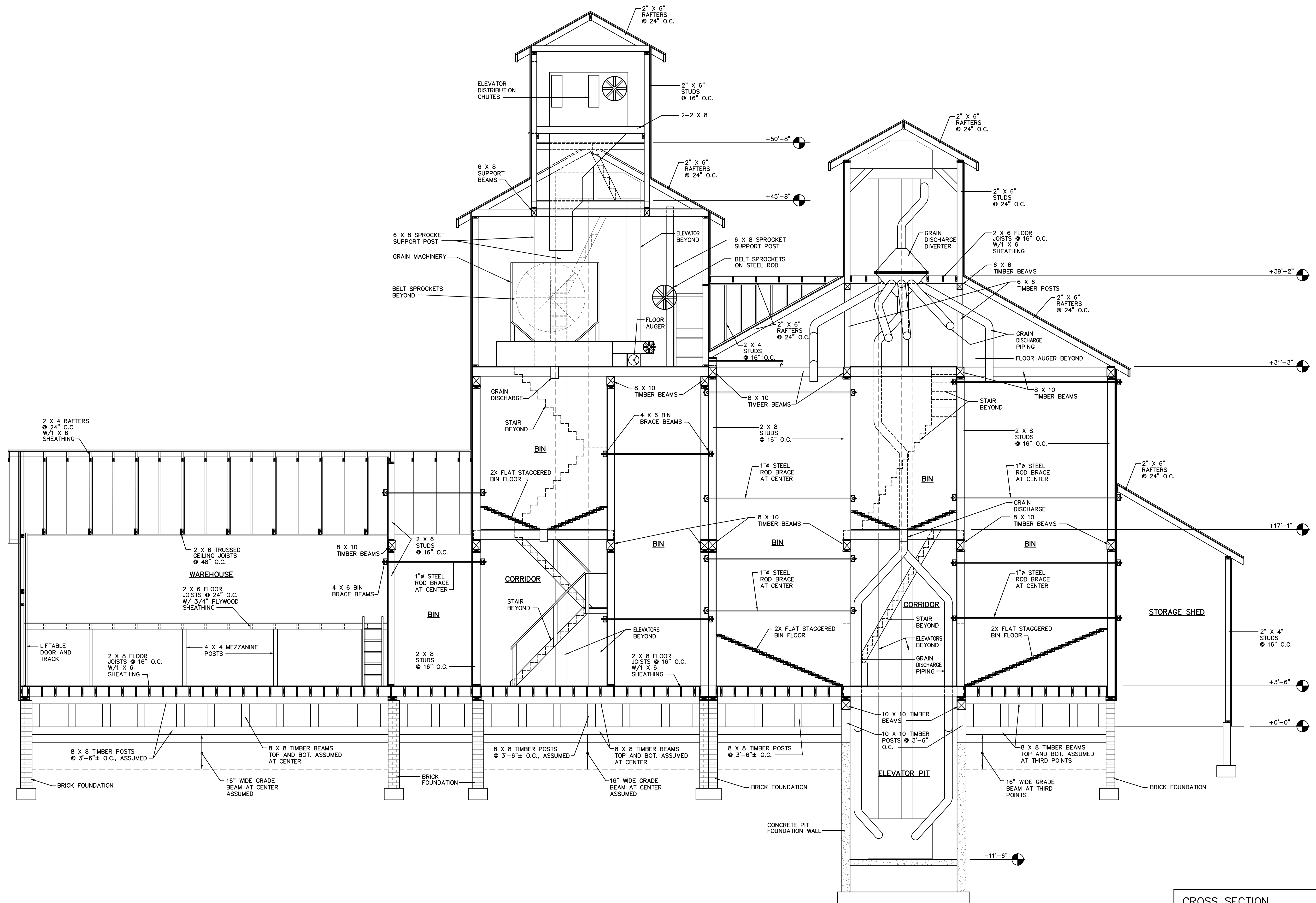


FIFTH LEVEL FLOOR PLAN

SCALE : 1/4" = 1'-0"



FIFTH LEVEL FLOOR PLAN					
NELIGH MILL ELEVATOR AS BUILT DRAWINGS WYLIE DRIVE NELIGH, NEBRASKA	<table border="1"> <tr> <td>DATE: 14 DECEMBER, 2022</td> </tr> <tr> <td>CHECKED BY: K.D.L.</td> </tr> <tr> <td>DRAWN BY: D.L.H.</td> </tr> <tr> <td>SHEET NO. JOB NUMBER 5 of 9 22073</td> </tr> </table>	DATE: 14 DECEMBER, 2022	CHECKED BY: K.D.L.	DRAWN BY: D.L.H.	SHEET NO. JOB NUMBER 5 of 9 22073
DATE: 14 DECEMBER, 2022					
CHECKED BY: K.D.L.					
DRAWN BY: D.L.H.					
SHEET NO. JOB NUMBER 5 of 9 22073					
 KENNETH D. LATHRUM & ASSOCIATES, P.C. STRUCTURAL ENGINEERING CONSULTANT 1801 N. 81st ST., OMAHA, NE 68114 (402) 391-5861 lathrum@qwestoffice.net					
<small>© KENNETH D. LATHRUM & ASSOCIATES, P.C. 2022 This document and the information contained herein shall not be reproduced or excerpted from without the express written permission from the author.</small>					

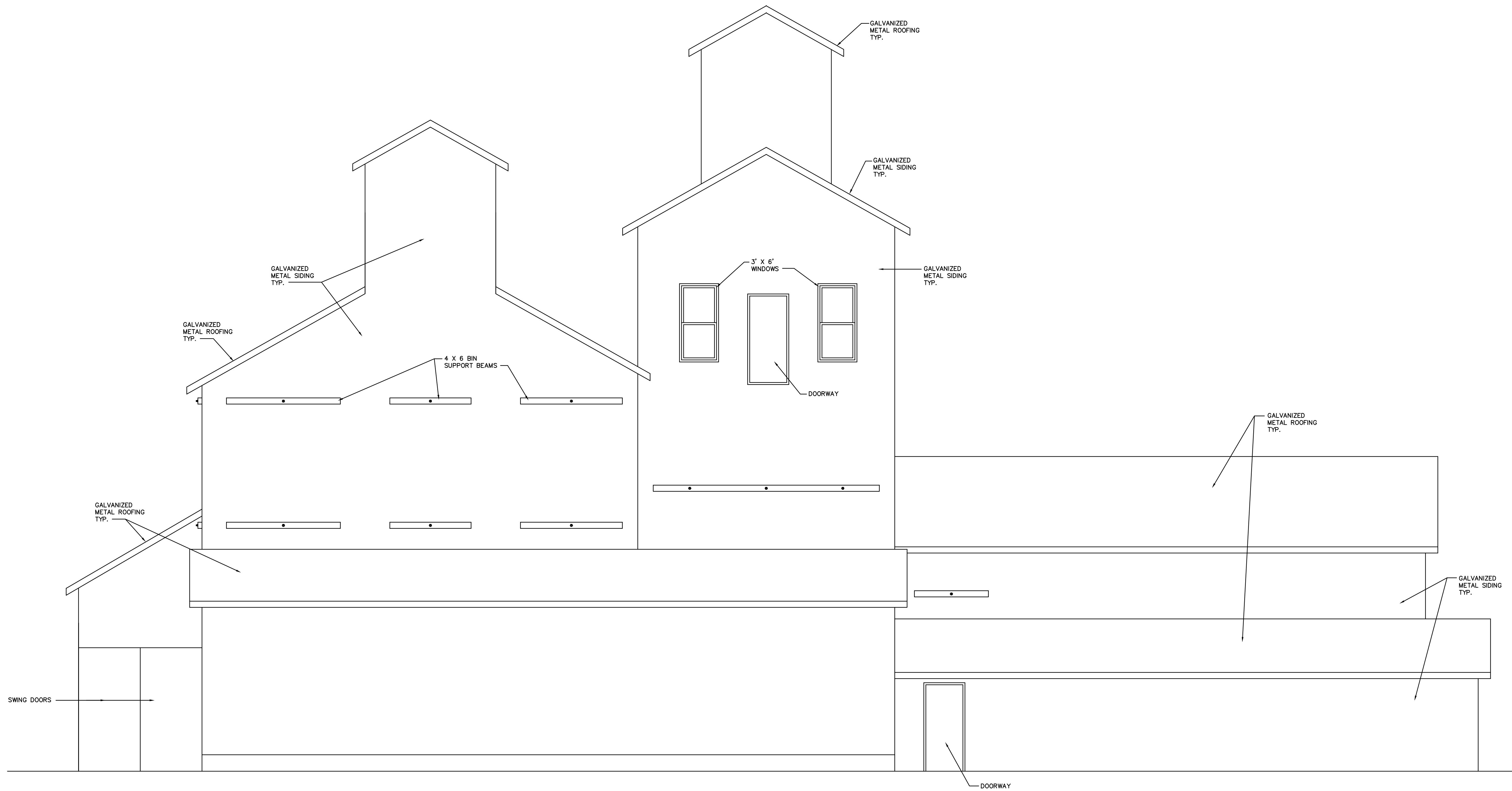


CROSS SECTION

SCALE : 1/4" = 1'-0"

1
6


CROSS SECTION	
NELIGH MILL ELEVATOR AS BUILT DRAWINGS WYLIE DRIVE NELIGH, NEBRASKA	DATE: 14 DECEMBER, 2022 CHECKED BY: K.D.L. DRAWN BY: D.L.H. SHEET NO. JOB NUMBER 6 of 9 22073
	KENNETH D. LATHRUM & ASSOCIATES, P.C. STRUCTURAL ENGINEERING CONSULTANT 1801 N. 81st ST., OMAHA, NE 68114 (402) 391-5861 lathrum-qwestoffice.net
	© KENNETH D. LATHRUM & ASSOCIATES, P.C. 2022 This document and the information contained herein shall not be reproduced or excerpted from without the express written permission from the author.

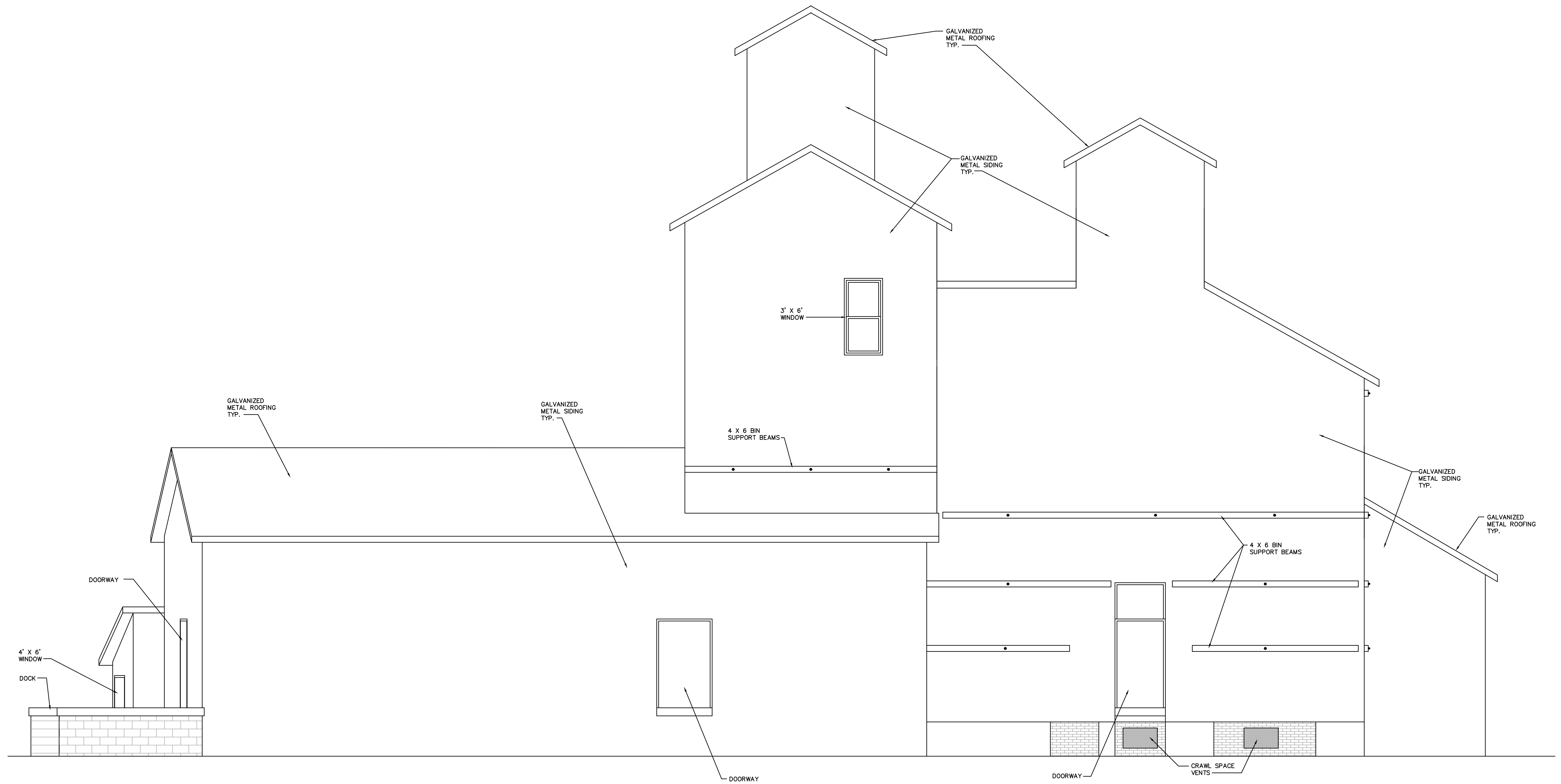


NORTH ELEVATION

SCALE : 1/16" = 1'-0"

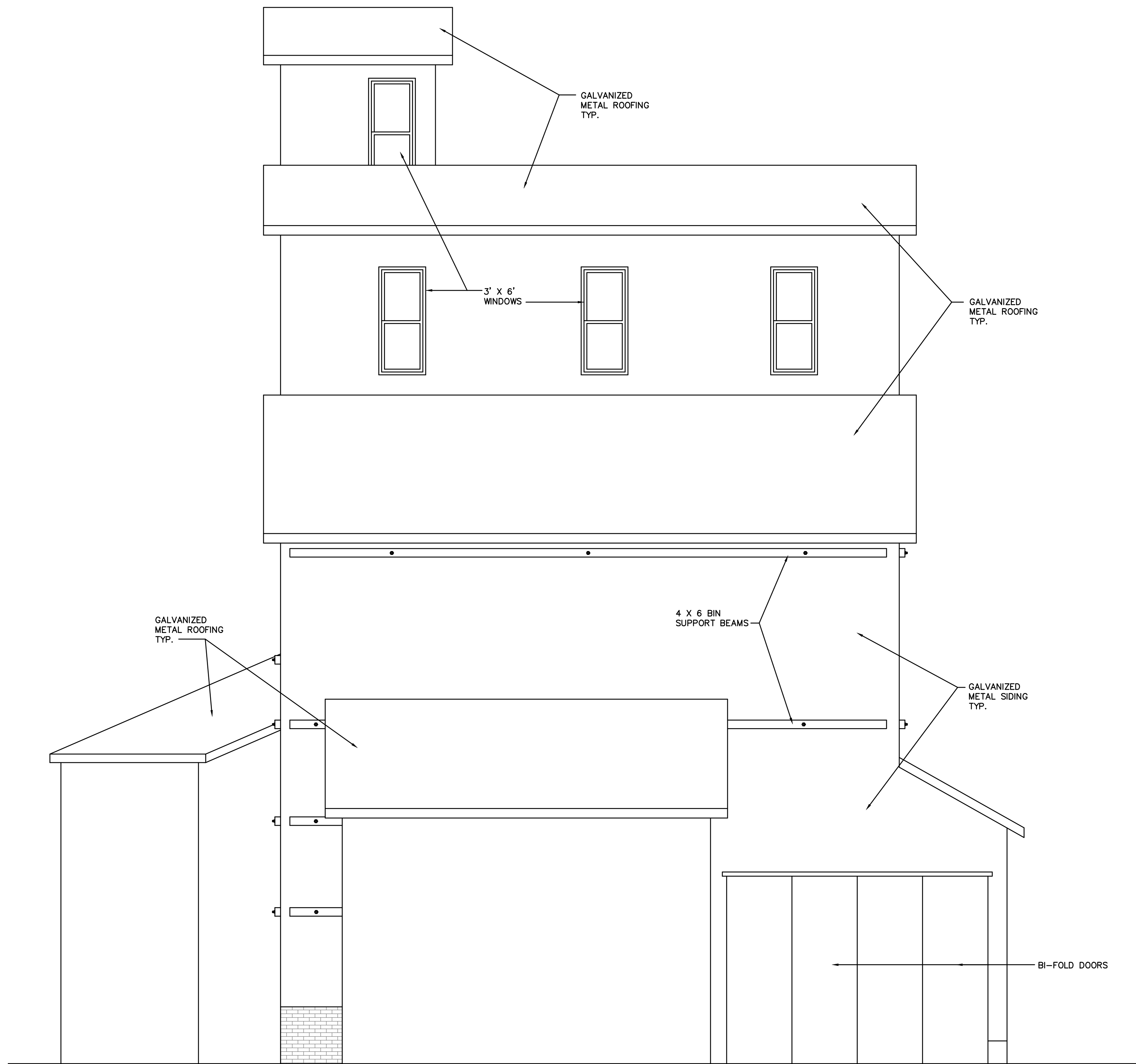
1
7

NORTH ELEVATION						
NELIGH MILL ELEVATOR AS BUILT DRAWINGS WYLIE DRIVE NELIGH, NEBRASKA	<table border="1"> <tr> <td>DATE: 14 DECEMBER, 2022</td> </tr> <tr> <td>CHECKED BY: K.D.L.</td> </tr> <tr> <td>DRAWN BY: D.L.H.</td> </tr> <tr> <td>SHEET NO. JOB NUMBER</td> </tr> <tr> <td>7 of 9 22073</td> </tr> </table>	DATE: 14 DECEMBER, 2022	CHECKED BY: K.D.L.	DRAWN BY: D.L.H.	SHEET NO. JOB NUMBER	7 of 9 22073
DATE: 14 DECEMBER, 2022						
CHECKED BY: K.D.L.						
DRAWN BY: D.L.H.						
SHEET NO. JOB NUMBER						
7 of 9 22073						
 KENNETH D. LATHRUM & ASSOCIATES, P.C. STRUCTURAL ENGINEERING CONSULTANT 1801 N. 81st St., OMAHA, NE 68114 (402) 391-5861 lathrum@questoffice.net						
<small>© KENNETH D. LATHRUM & ASSOCIATES, P.C. 2022 This document and the information contained herein shall not be reproduced or excerpted from without the express written permission from the author.</small>						



SOUTH ELEVATION
 SCALE : 1/16" = 1'-0"

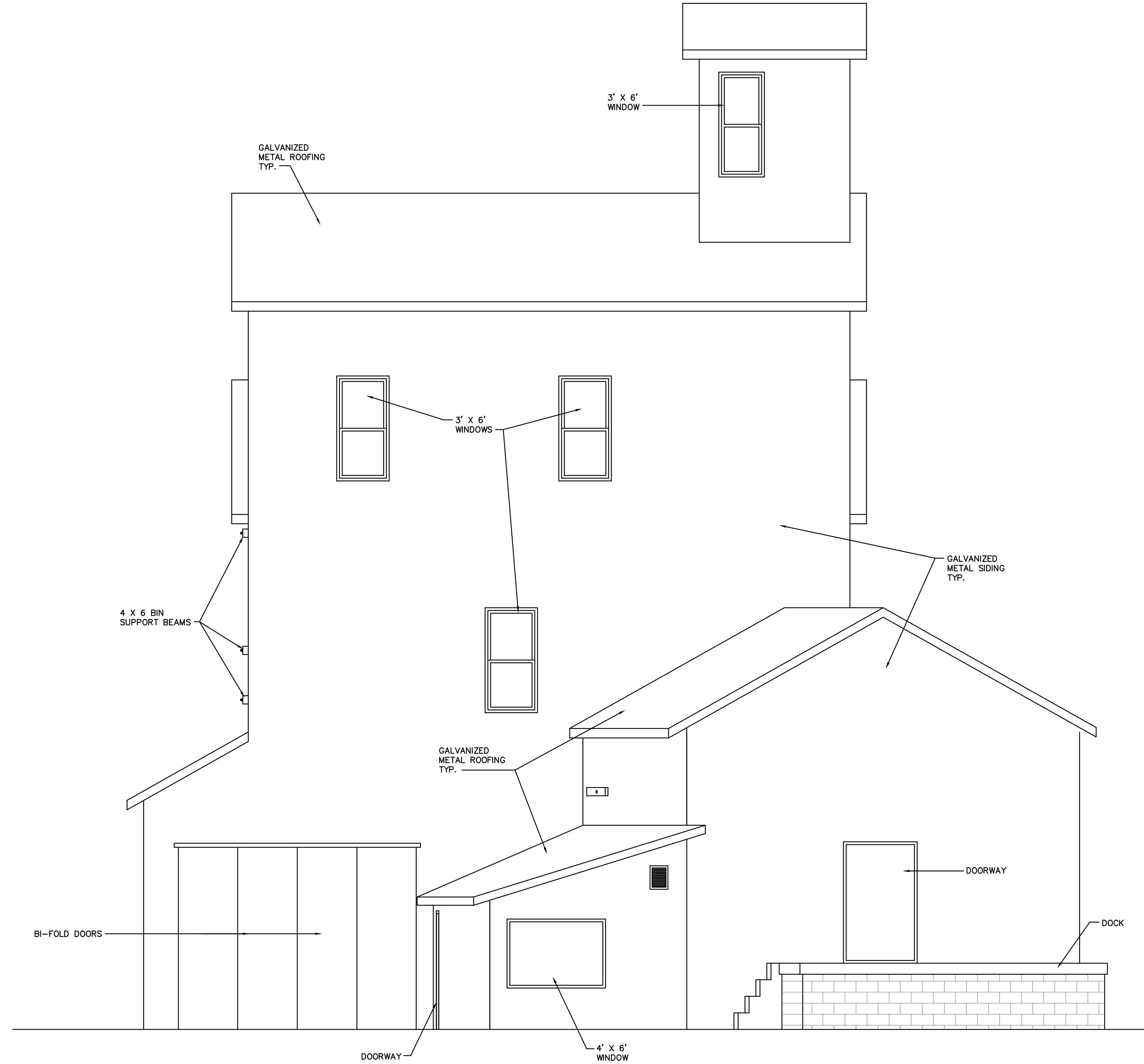
SOUTH ELEVATION	
NELYGH MILL ELEVATOR AS BUILT DRAWINGS WYLIE DRIVE NELIGH, NEBRASKA	DATE: 14 DECEMBER, 2022 CHECKED BY: K.D.L. DRAWN BY: D.L.H. SHEET NO. JOB NUMBER 8 of 9 22073
KENNETH D. LATHRUM & ASSOCIATES, P.C. STRUCTURAL ENGINEERING CONSULTANT 1901 N. 81st ST., OMAHA, NE 68114 (402) 391-5861 lathrum@westoffice.net	
<small>© KENNETH D. LATHRUM & ASSOCIATES, P.C. 2022 This document and the information contained herein shall not be reproduced or excerpted from without the express written permission from the author.</small>	



EAST ELEVATION

SCALE : 1/16" = 1'-0"

1
9



WEST ELEVATION

SCALE : 1/16" = 1'-0"

2
9

EAST AND WEST ELEVATIONS	
NELIGH MILL ELEVATOR AS BUILT DRAWINGS WYLIE DRIVE NELIGH, NEBRASKA	DATE: 14 DECEMBER, 2022 CHECKED BY: K.D.L. DRAWN BY: D.L.H. SHEET NO. JOB NUMBER 9 of 9 22073
KENNETH D. LATHRUM & ASSOCIATES, P.C. STRUCTURAL ENGINEERING CONSULTANT 1801 N. 81st ST., OMAHA, NE 68114 (402) 391-5861 lathrum@qwestoffice.net	
<small>© KENNETH D. LATHRUM & ASSOCIATES, P.C. 2022 This document and the information contained herein shall not be reproduced or excerpted from without the express written permission from the author.</small>	